



**Latgale – 2 Days**  
**(Daugavpils Open Championship in Orienteering Sport)**  
**June 14 – 15, 2014, Daugavpils**

**Organizers**

OK Stiga, Daugavpils Sport Department

**Competition Program**

**June 14**

11.30 – 12.30 Registration in the competition center near Rugeli lake.  
13.00 The start in a middle distance.  
Scheme of the competition center: [here](#)

**June 15**

11.00 The start in a long distance near Rugeli lake.  
14.00 Closing ceremony, awarding

**Participants**

VS 12, 14, 16, 21, 40, 50, 60 OPEN (V – men, S – women)

OPEN - Technically simple distance

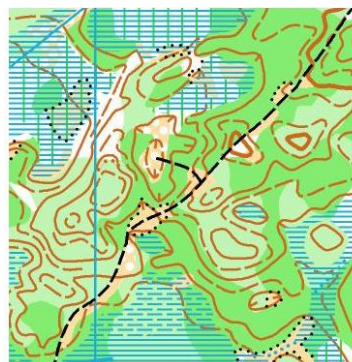
SV 10 - Marked distance (control points are not far from the marking)

SV 8 - Marked distance (control points are on the marking)

**Maps**

For all groups M 1:10 000, h 2,5m.

Author of the map: L. Malankovs



Map was drawn from 2013 to 2014. Part of the map covers areas not used for competitions in the last decades. The eastern part of the map: a quarry with a variety of young plantations. The Western part – a pine forest with different size marshes having different degree of running-ability. The Northern part of the map - a former peat marsh. Maximal height difference between the areas - 40m.

## Course lengths

	Middle distance	Long distance
<b>Group</b>		
V21	6 – 7 km	9 – 11 km
S21, V40, V16	5 – 6 km	7 – 9 km
S40, V50, S16	4 – 5 km	5 – 6 km
S50, V60, V14	3 – 4 km	4 – 5 km
S60, S14, OPEN	2 – 3 km	3 – 4 km
V12, S12	1 – 2 km	2 – 3 km
V8, S8, V10, S10	0,5 – 1 km	0,5 – 1 km

## Assessment

The results of each day separately and the total 2-day sum will be assessed.

## Awarding

The 1st prize winners will be given diplomas;

On both days, the winners of SV 21 group will be awarded Daugavpils championship medals.

The 1st - 3rd prize winners in the sum of 2 days will be awarded Daugavpils championship medals

## Punching system

In all groups – with Sport Ident. SportIdent rent 1 Euro (SV 12, 14, 16 – 0.50 Euro)  
Loss of SPORTident– P-CARD (13 Euro), SI-9 (40 Euro)

## Entry

Online entry till June 11, 23:59, only online:

[enter competitor,](#)  
[entered competitors.](#)

After the online application deadline you can apply only for vacant places with + 50% increase in entry fees.

The application shall be considered as a guarantee of membership fee.

Those applicants, who will not participate, 50% of the entry fee will be charged.

## Participation Fee

SV 21,40,50,60, OPEN	6.00 Euro a day (OK Stiga members – 3.00 Euro)
SV 12,14,16	3.00 Euro a day (OK Stiga members – 1.50 Euro)
SV 8,10	free of charge

## Accommodation

In tents by the lake of Rugeli.

Other accommodation possibilities:

<http://visitdaugavpils.lv/>

## Information

<http://okstiga.com>

Anastasija Smolakova (rus/en/lv)

tāl. 29846908,

e-pasts: anastasija.smolakova@gmail.com